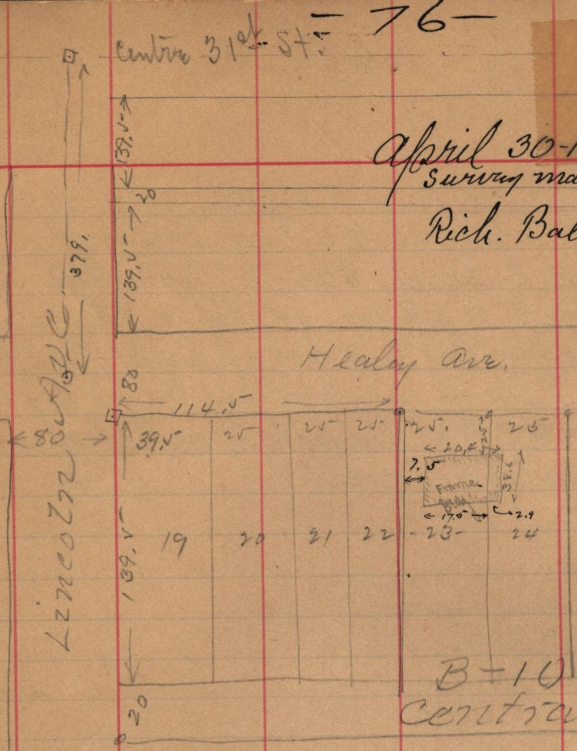


April 30-1897
 Survey made for
 Rich. Ballantyne

N



Description of the Paradise Mining District
 Utah,

Beg. at point on Meridian line, 3 miles more or less
 West from a point of the Ridge situated bet. so called Hepler
 Cañon, and Green Cañon, the line running from
 thence E. 20 miles more or less. to the divide bet
 Calks and Rich Co. thence S. along said divide
 to the line bet Calks & Weber Co. 16 miles more
 or less, thence West along said line to the afore
 said Meridian, ^{20 miles more or less} thence North 16 miles more
 or less to Org. 320 sq miles more or less.